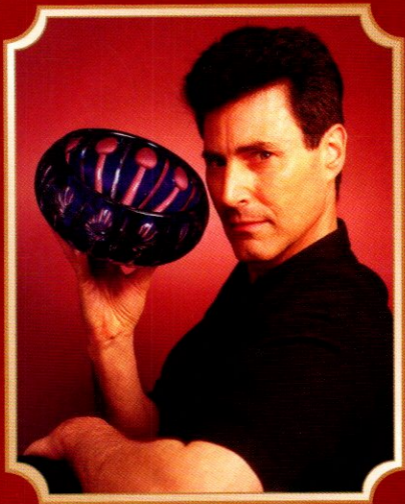


THE
Uri Geller
CRYSTAL COLLECTION



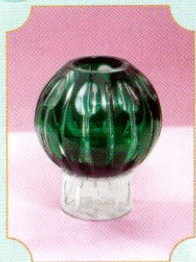
By Dickenson Crystal

A short biography

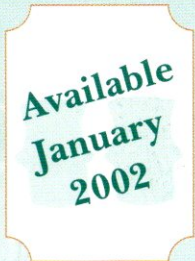
Uri Geller is the world's most investigated and celebrated paranormalist. Famous around the globe for his mind-bending psychic powers, he has led a unique life shrouded in debate and mystery. He is also related to Sigmund Freud.

He was studied by scientists who worked with Albert Einstein and the world's most prestigious scientific magazine, Nature, published a paper on Uri's work at the Stanford Research Institute in the U.S.A – a unique endorsement, and an irrefutable proof that his powers are genuine. His work with government agencies included attending nuclear disarmament negotiations to bombard and influence delegates with positive thought waves to sign the Nuclear Arms Reduction Treaty. For decades, this aspect of his career was too confidential and controversial to discuss.

Green



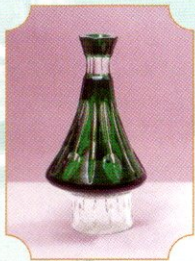
00303



01403



01503



00803

reen" comes from the same root as "grow," so green symbolizes
mystics see green as the marriage of balance and harmony, the

A vegetarian and fervent promoter of peace, he has used his psychic gifts to successfully detect oil and precious metals, which provided him the freedom to help others. He is the motivational MindPower coach to Premier League footballers, industrialists, Formula One drivers and racing cyclists, and cycles 27 miles daily on his exercise bike.

As a columnist, he writes for leading newspapers and magazines.

Uri's artistic skills began during his early childhood. A 'pupil' of Salvador Dali, whom he knew well, Uri's drawings, paintings and artworks have been exhibited in major galleries and museums in the U.S.A, Europe, Japan and Israel. His pottery, crystals, glass and natural rock crystal jewellery creations are in great demand worldwide. Uri's drawings feature in Belinda Carlisle's and Michael Jackson's latest albums and he has designed

*the logo of the most successful boy band in the world ever, N*SYNC. He has also met great artists such as Andy Warhol, Picasso, Peter Max and John Lennon, whom he befriended. Uri's tireless dedication to charitable work led to his appointment as the Honorary Vice-President of the Royal Hospital for Children in Bristol and of the Royal Berkshire Hospital, close to his Thames-side mansion. He is the father of a teenage daughter and a twenty year-old son, the owner of four dogs and the author of fourteen best-sellers, including the novels Ella (which is being turned into a major motion picture) and Dead Cold, the latter having been listed as a contender for the Golden Dagger Award by The Times in the U.K.*

***Please visit Uri's website at www.urigeller.com
and feel free to write to him at
urigeller@compuserve.com***

Green is a perfect colour for creating balance in your life, it is an extremely soothing colour, which connects you to the green of the countryside.



01103

**Available
January
2002**

00403

**Available
January
2002**

00503



01603

Green is the most refreshing, restful colour to the eye. The word "green" that which grows: rebirth, regeneration, the renewal of life. Indian proverb that bridges cause and effect.

Blue



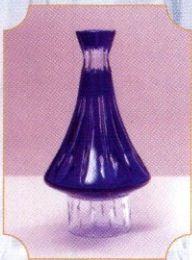
00307

Available
January
2002

01407

Available
January
2002

01507



00807

...e when he wrote that blue is "the infinite penetration into the
...are strongly attracted to blue tend to be devoted and deliberate in
...e world.

Designed by Uri Geller

Produced by Dickenson Crystal

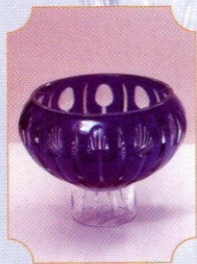
Congratulations, you have just purchased an objet d'art, a gift to be treasured and cherished for generations to come.

The fruits of a unique and mystical mixture of creative consciousness and perfect production, this individually numbered, limited edition range of handcrafted crystal-ware is extraordinarily special.

The creation of this range is sparked by an infusion of my artistic creativity (and world-renowned paranormal abilities) with Dickenson Crystal's impeccable quality of production. The box encasing the crystal is made in England, from materials of the highest craftsmanship, designed especially for my collection.

The crystal is accompanied by a hand-made Egyptian papyrus certificate, personally numbered and signed by myself. It is rolled into a beautiful engraved, 24-ct gold-plated bent spoon.

Blue
Blue is a great healing colour it should keep you calm and relaxed.



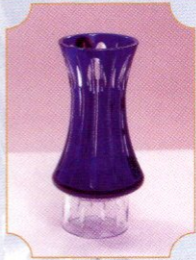
01107



00407



00507



01607

The Russian artist Kadinsky captured the expansive essence of blue, absolute essence - where there is, and can be, no end." People who take their actions and since blue is everywhere, they feel a unity with t

The uniqueness of most of the pieces manifests itself in the crystal's capability of gently swaying kinetically, the energy being transferred from your hands to the crystal, a wholly distinctive feature associated with my ability to move objects by psychokinesis.

Our collection radiates a calming sense of peace of mind, with which I endeavour to surround myself. This healing atmosphere, instilling infinite positivity, could tap into your inner mind and awaken your dormant energies, such as the immense powers of prayer and love.

You will notice the etched motif of a curved spoon that I wished to incorporate in my design. The spoon bears great significance, a basic yet sensual, life-enhancing utensil, far-reaching back in time over dozens of centuries, a tool enabling us to nourish our souls and bodies.

Particularly interesting are spoons from historical periods such as the Egyptian, Roman and Medieval, which have been found today in such sacred places as the Pyramids.

Red



00305

**Available
January
2002**

01405

**Available
January
2002**

01505



00805

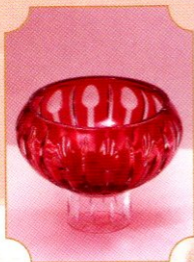
Bizarrely, it was a spoon that bent in my hand at the tender age of four which made me famous, later catapulting me into stardom owing to my hundreds of television appearances. Therefore it is fitting that this subliminal pattern should be so eloquently and delicately carved into these exquisitely curvaceous crystals.

I have since ebbed away from entertainment and focused predominantly on my artistic creations and writing. This has allowed me to help others to understand the power of their minds, and the great value of awakening, exercising and harnessing this force as a tool with which to change their lives for the better. Today I envision myself as a catalyst, a trigger and an enabler.

I do so very dearly hope that you enjoy this inimitable crystal piece, and I wish you plenty of health, love and happiness,

Uri Geller

*Red is the most energetic colour of all.
It should boost your energy levels.*



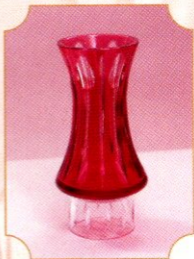
01105

**Available
January
2002**

00405

**Available
January
2002**

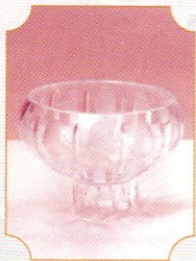
00505



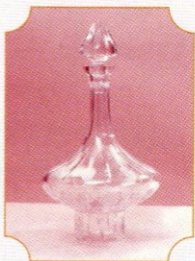
01605

*When red is featured in a dream the tint or shade carries different meanings.
A light tint of red - suggests the glory of success.*

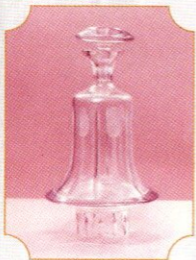
White is a pure crystal colour, which should connect you to your spiritual self and enhance mind, body and spirit.



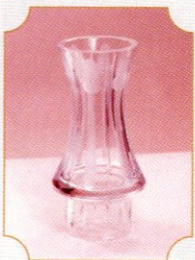
01101



00401

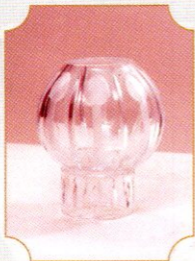


00501

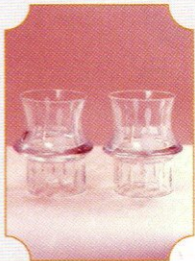


01601

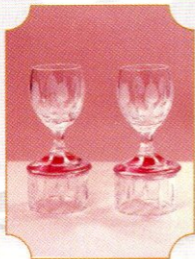
White



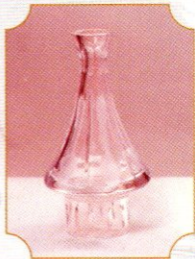
00301



01401



01501



00801